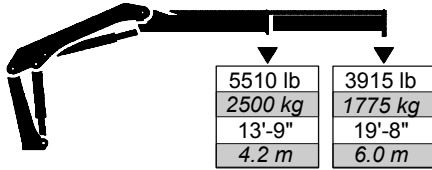


11/76

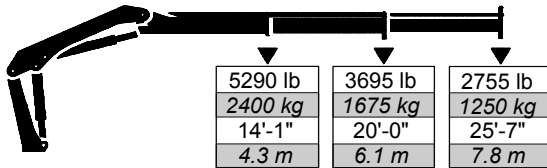
Articulating Crane Technical Specifications

11/76 Lifting Capacities

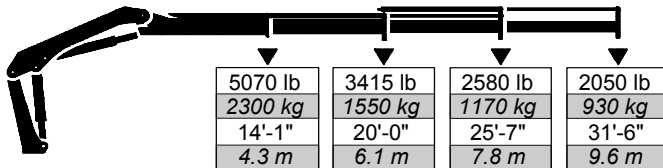
11/76 - 1 Hydraulic



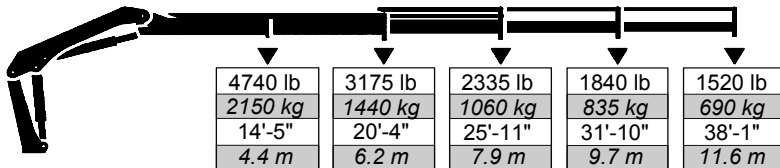
11/76 - 2 Hydraulic



11/76 - 3 Hydraulic



11/76 - 4 Hydraulic



Note: Crane appearance subject to change.

11/76 Specifications

Outrigger Pad Diameter	6.3" (160 mm)
Crane Storage Height	7' 2" (2187 mm)
Mounting Space ***	2' 6" (755 mm)
Rotational Torque	12,515 ft-lb (1730 kg-m)
Rotation	400°
Optimum Pump Performance	13 U.S. gpm (50 L/min)
System Pressure	3845 psi (265 bar)
Oil Reservoir Capacity	17.2 gal (65 L)
Outrigger Extension Span	
Standard (manual out /hydraulic down)	16' 5" (5.0 m)
Weight	440 lb (200 kg)
Option (hydraulic out / hydraulic down)	19' 8" (6.0 m)
Weight	660 lb (300 kg)

Minimum Chassis Specifications

Front Axle Rating (GAWR)	8500 lb (3855 kg)
Rear Axle Rating (GAWR)	17,000 lb (7710 kg)
Resistance To Bending Moment	1,125,000 in-lb (129,615 kg-m)

11/76	1 - Hydraulic	2 - Hydraulic	3 - Hydraulic	4 - Hydraulic
Crane Rating*	75,945 ft-lb (10.5 tm)	74,500 ft-lb (10.3 tm)	71,605 ft-lb (9.9 tm)	68,715 ft-lb (9.5 tm)
Maximum Horizontal Reach	20' 4" (6.2 m)	26' 3" (8.0 m)	32' 10" (10.0 m)	39' 1" (11.9 m)
Maximum Vertical Reach	27' 11" (8.5 m)	33' 10" (10.3 m)	40' 0" (12.2 m)	46' 3" (14.1 m)
Maximum Capacity	7320 lb (3320 kg)	7165 lb (3250 kg)	6835 lb (3100 kg)	6615 lb (3000 kg)
Max Cap @ Max Reach	3915 lb (1775 kg)	2755 lb (1250 kg)	2050 lb (930 kg)	1520 lb (690 kg)
Crane Weight **	2910 lb (1320 kg)	3165 lb (1435 kg)	3415 lb (1550 kg)	3660 lb (1660 kg)
Hook Approach				
Vertical	8' 10" (2.7 m)	8' 6" (2.6 m)	8' 2" (2.5 m)	7' 10" (2.4 m)
Horizontal	2' 6" (0.8 m)	2' 9" (0.9 m)	3' 1" (0.9 m)	3' 3" (1.0 m)
Center of Gravity - Stored				
Vertical	2' 1" (640 mm)	2' 2" (660 mm)	2' 2" (670 mm)	2' 3" (675 mm)
Horizontal (C/L RotTo Bridge)	13" (325 mm)	13" (325 mm)	13" (325 mm)	13" (325 mm)

* Crane rating (ft-lb) is the rated load (lb) multiplied by the respective distance (ft) from centerline of rotation with all extensions retracted and the inner and outer booms in a horizontal position, per ANSI B30.22. ** Crane weight does not include outriggers. *** Maximum swing clearance radius required is 18" (456 mm) at 7'-7" (2314 mm).

© 2009 Iowa Mold Tooling Co., Inc. All Rights Reserved.



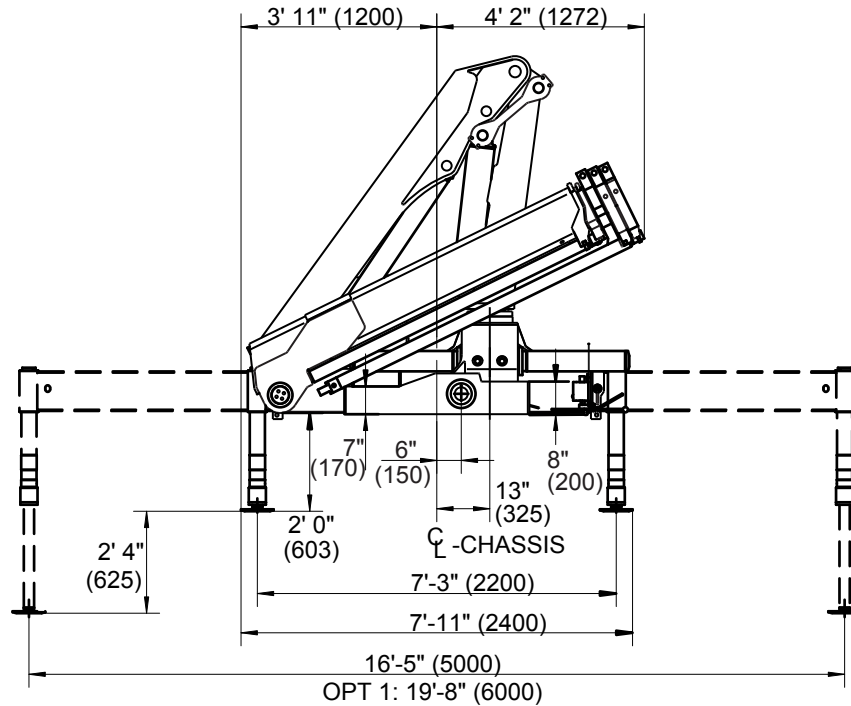
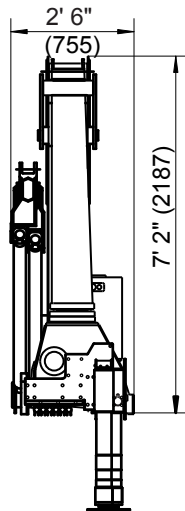
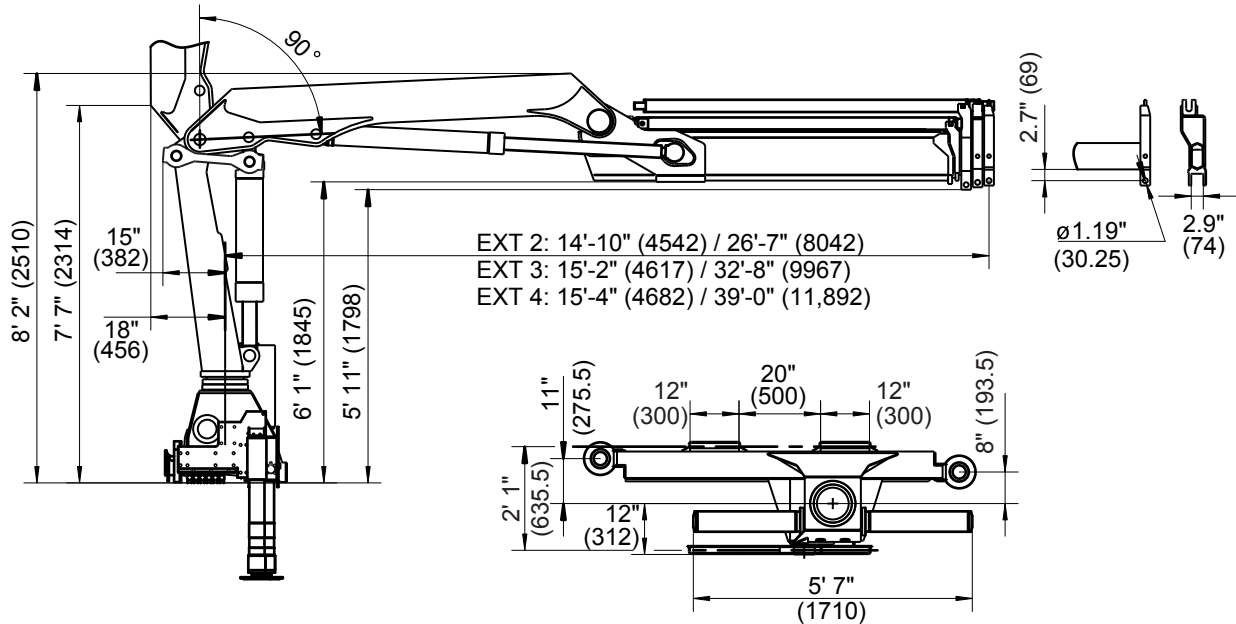
An Oshkosh Corporation Company

1 1/76 Articulating Crane

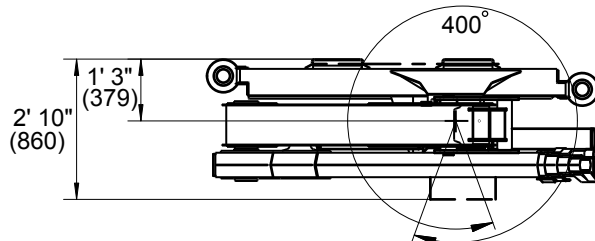


An Oshkosh Corporation Company

Geometric Configurations



NOTE:
ALL DIMENSIONS IN
FEET & INCHES (mm).



Iowa Mold Tooling Co., Inc.

500 Highway 18 West P.O. Box 189 Garner, Iowa 50438-0189
800-247-5958 641-923-3711 Fax: 641-923-6063 www.imt.com

IMT reserves the right to make changes in engineering, design, and specifications; add improvements; or discontinue manufacturing at any time without notice or obligation.
IMT and the IMT LOGO are registered trademarks or trademarks of Iowa Mold Tooling Co., Inc., Garner, IA, USA.

© 2008 Iowa Mold Tooling Co., Inc. All Rights Reserved.